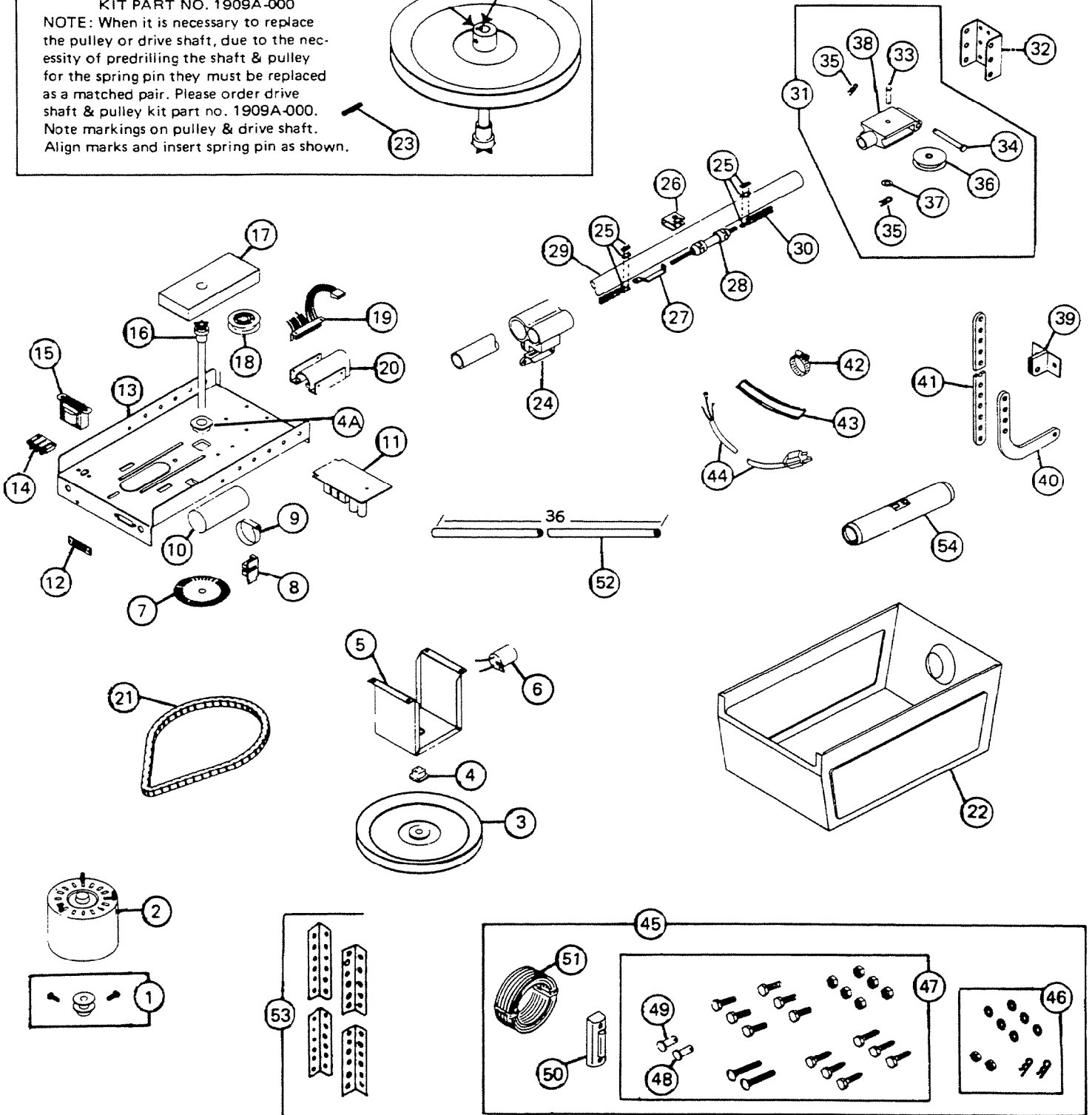


PARTS LIST

EFFECTIVE DATE	MODEL	PRODUCT GROUP
FEBRUARY 1980	G-578-1 & 2 G-578S-1 & 2 REVISED GA-578-1 & 2 GA-578S-1 & 2 NEW	G.D.O.

KIT PART NO. 1909A-000
 NOTE: When it is necessary to replace the pulley or drive shaft, due to the necessity of predrilling the shaft & pulley for the spring pin they must be replaced as a matched pair. Please order drive shaft & pulley kit part no. 1909A-000. Note markings on pulley & drive shaft. Align marks and insert spring pin as shown.



NuTone Division
Scovill

(PLEASE SEE OTHER SIDE)

REF.	ORIGINAL PART NO.	PART DESCRIPTION		MODEL USED ON	CURRENT REPLACEMENT PART NO.
1	51263	MOTOR PULLEY		G-578-1 & 2 GA-578-1 & 2 G-578S-1 & 2 GA-578S-1 & 2	51263-015
2	67924	MOTOR		G-578-1 & 2 GA-578-1 & 2	67924-000
	67925			G-578S-1 & 2 GA-578S-1 & 2	67925-000
3	51654	9" PULLEY — REPLACE W/KIT		G-578-1 & 2 GA-578-1 & 2 G-578S-1 & 2 GA-578S-1 & 2	1909A-000
4	51463	BEARING	BOTTOM	G-578-1 & 2 GA-578-1 & 2 G-578S-1 & 2 GA-578S-1 & 2	51463-000
4A	51083		TOP	G-578-1 & 2 GA-578-1 & 2 G-578S-1 & 2 GA-578S-1 & 2	51083-000
5	51462	MAIN SUPPORT		G-578-1 & 2 GA-578-1 & 2 G-578S-1 & 2 GA-578S-1 & 2	51462-000
6	51464	LAMP SOCKET		G-578-1 & 2 GA-578-1 & 2 G-578S-1 & 2 GA-578S-1 & 2	51464-000
7	1892A	DISC ASSY		G-578-1 & 2 GA-578-1 & 2 G-578S-1 & 2 GA-578S-1 & 2	1892A-000
8	42243	P.C. BOARD & INTR. BLOCK ASSY		G-578-1 & 2 G578S-1 & 2	42243-000
	42476			GA-578-1 & 2 GA-578S-1 & 2	42476-000
9	50056	CAPACITOR CLAMP		G-578-1 & 2 GA-578-1 & 2 G-578S-1 & 2 GA-578S-1 & 2	50056-000
10	50055	CAPACITOR	53-64UFD	G-578-1 & 2 GA-578-1 & 2	50055-000
	50593		36-43UFD	G-578S-1 & 2 GA-578S-1 & 2	50593-000
11	42240	P.C. BOARD		G-578-1 & 2	42240-000
	42241			G-578S-1 & 2	42241-000
	42426			GA-578-1 & 2	42426-000
	42428			GA-578S-1 & 2	42428-000
12	51421	TERMINAL STRIP		G-578-1 & 2 GA-578-1 & 2 G-578S-1 & 2 GA-578S-1 & 2	51421-000
(CONTINUED ON NEXT PAGE)					

REF.	ORIGINAL PART NO.	PART DESCRIPTION	MODEL USED ON	CURRENT REPLACEMENT PART NO.
13	51460	BASE ONLY	G-578-1 & 2 GA-578-1 & 2 G-578S-1 & 2 GA-578S-1 & 2	51460-000
14	51422	TERMINAL BLOCK	G-578-1 & 2 GA-578-1 & 2 G-578S-1 & 2 GA-578S-1 & 2	51422-000
15	42244	TRANSFORMER ASSY	G-578-1 & 2 GA-578-1 & 2 G-578S-1 & 2 GA-578S-1 & 2	42244-000
16	51651	DRIVE SHAFT ASSY REPLACE W/KIT	G-578-1 & 2 GA-578-1 & 2 G-578S-1 & 2 GA-578S-1 & 2	1909A-000
17	51524	CHAIN GUARD	G-578-1 & 2 GA-578-1 & 2 G-578S-1 & 2 GA-578S-1 & 2	51524-000
18	51465	PULLEY CHAIN	G-578-1 & 2 GA-578-1 & 2 G-578S-1 & 2 GA-578S-1 & 2	51465-000
19	51593	CONNECTOR & MTG BRKT ASSY	G-578-1 & 2 G-578S-1 & 2	51593-000
	42434		GA-578-1 & 2 GA-578S-1 & 2	42434-000
20	51478	TUBE MTG BRACKET	G-578-1 & 2 GA-578-1 & 2 G-578S-1 & 2 GA-578S-1 & 2	51478-000
21	1898A	"V" BELT	G-578-1 & 2 GA-578-1 & 2 G-578S-1 & 2 GA-578S-1 & 2	50051-000
22	51499	COVER COMP	G-578-1 & 2	51499-000
	51506		G-578S-1 & 2	51506-000
	51695		GA-578-1 & 2	51695-000
	51708		GA-578S-1 & 2	51708-000
23	51477	SPRING PIN	G-578-1 & 2 GA-578-1 & 2 G-578S-1 & 2 GA-578S-1 & 2	51598-000
24	51235	TROLLEY ASSY	G-578-1 & 2 GA-578-1 & 2 G-578S-1 & 2 GA-578S-1 & 2	51235-000
25	69486	CHAIN COUPLING LINK	G-578-1 & 2 GA-578-1 & 2 G-578S-1 & 2 GA-578S-1 & 2	69486-000
(CONTINUED ON NEXT PAGE)				

EF.	ORIGINAL PART NO.	PART DESCRIPTION	MODEL USED ON	CURRENT REPLACEMENT PART NO.
26	51479	ROLLER MTG BRACKET	G-578-1 & 2 GA-578-1 & 2 G-578S-1 & 2 GA-578S-1 & 2	51479-000
27	51232	CONNECTOR	G-578-1 & 2 GA-578-1 & 2 G-578S-1 & 2 GA-578S-1 & 2	51232-020
28	51240	TURNBUCKLE	G-578-1 & 2 GA-578-1 & 2 G-578S-1 & 2 GA-578S-1 & 2	51240-000
29	51247	TUBING SECTION (1)	G-578-1 & 2 GA-578-1 & 2 G-578S-1 & 2 GA-578S-1 & 2	51247-015
30	64910	CHAIN	G-578-1 & 2 GA-578-1 & 2 G-578S-1 & 2 GA-578S-1 & 2	64910-000
31	51627	MOUNTING BRACKET ASSY	G-578-1 & 2 GA-578-1 & 2 G-578S-1 & 2 GA-578S-1 & 2	51627-000
32	51244	MOUNTING BRACKET	G-578-1 & 2 GA-578-1 & 2 G-578S-1 & 2 GA-578S-1 & 2	51244-000
33	51246	PIN — PULLEY	G-578-1 & 2 GA-578-1 & 2 G-578S-1 & 2 GA-578S-1 & 2	51246-020
34	50103	PIN	G-578-1 & 2 GA-578-1 & 2 G-578S-1 & 2 GA-578S-1 & 2	50103-015
35	50106	CLIP	G-578-1 & 2 GA-578-1 & 2 G-578S-1 & 2 GA-578S-1 & 2	50106-015
36	51245	PULLEY W/BEARING	G-578-1 & 2 GA-578-1 & 2 G-578S-1 & 2 GA-578S-1 & 2	51245-000
37	51260	BEARING	G-578-1 & 2 GA-578-1 & 2 G-578S-1 & 2 GA-578S-1 & 2	51260-000
38	50573	BRACKET HANGER	G-578-1 & 2 GA-578-1 & 2 G-578S-1 & 2 GA-578S-1 & 2	50573-000
(CONTINUED ON NEXT PAGE)				

REF.	ORIGINAL PART NO.	PART DESCRIPTION	MODEL USED ON	CURRENT REPLACEMENT PART NO.
39	50574	BRACKET — DOOR MTG	G-578-1 & 2 GA-578-1 & 2 G-578S-1 & 2 GA-578S-1 & 2	50574-000
40	50096	ARM CURVED	G-578-1 & 2 GA-578-1 & 2 G-578S-1 & 2 GA-578S-1 & 2	50096-005
41	50095	ARM STRAIGHT	G-578-1 & 2 GA-578-1 & 2 G-578S-1 & 2 GA-578S-1 & 2	50095-005
42	51234	HOSE CLAMP	G-578-1 & 2 GA-578-1 & 2 G-578S-1 & 2 GA-578S-1 & 2	51234-000
43	51233	EXTRUSION CHANNEL (1)	G-578-1 & 2 GA-578-1 & 2 G-578S-1 & 2 GA-578S-1 & 2	51233-000
44	50006	CORD ASSY	G-578-1 & 2 GA-578-1 & 2 G-578S-1 & 2 GA-578S-1 & 2	50006-000
45	51501	HARDWARE ASSY COMP REF. NO'S. 39, 40, 42, 43, 46, 47, 48, 49, 50, 51, 52, & 54	G-578-1 & 2	51501-000
	51508		G-578S-1 & 2	51508-000
	51700		GA-578-1 & 2	51700-000
	51710		GA-578S-1 & 2	51710-000
46	50639	ENVELOPE ASSY	G-578-1 & 2 GA-578-1 & 2 G-578S-1 & 2 GA-578S-1 & 2	50639-000
47	51626	ENVELOPE ASSY 6 - LAG BOLTS 5/10 - 9 x 1½ 1 - PIN ¾ x 29/32" 6 - NUTS 5-1/16 - 18 HEX 1 - PIN ¾ x 23/32" 6 - BOLTS No. 18 - 5/16" x 1" 2 - CARRIAGE BOLTS ¼" - 20 x 1¾"	G-578-1 & 2 GA-578-1 & 2 G-578S-1 & 2 GA-578S-1 & 2	51626-000
48	50104	PIN	G-578-1 & 2 GA-578-1 & 2 G-578S-1 & 2 GA-578S-1 & 2	50104-015
49	50105	PIN	G-578-1 & 2 GA-578-1 & 2 G-578S-1 & 2 GA-578S-1 & 2	50105-015
50	05120-900	PUSHBUTTON	G-578-1 & 2 GA-578-1 & 2 G-578S-1 & 2 GA-578S-1 & 2	05120-900
(CONTINUED ON NEXT PAGE)				

REF.	ORIGINAL PART NO.	PART DESCRIPTION	MODEL USED ON	CURRENT REPLACEMENT PART NO.
51	50138	WIRE 2—COND	G-578-1 & 2 GA-578-1 & 2 G-578S-1 & 2 GA-578S-1 & 2	50138-000
52	50109	ROPE 36"	G-578-1 & 2 GA-578-1 & 2 G-578S-1 & 2 GA-578S-1 & 2	50109-000
53	50204	HANGER STRAP	G-578-1 & 2 GA-578-1 & 2 G-578S-1 & 2 GA-578S-1 & 2	50204-000
54	51576	TUBE COUPLING (1)	G-578-1 & 2 GA-578-1 & 2 G-578S-1 & 2 GA-578S-1 & 2	51576-020