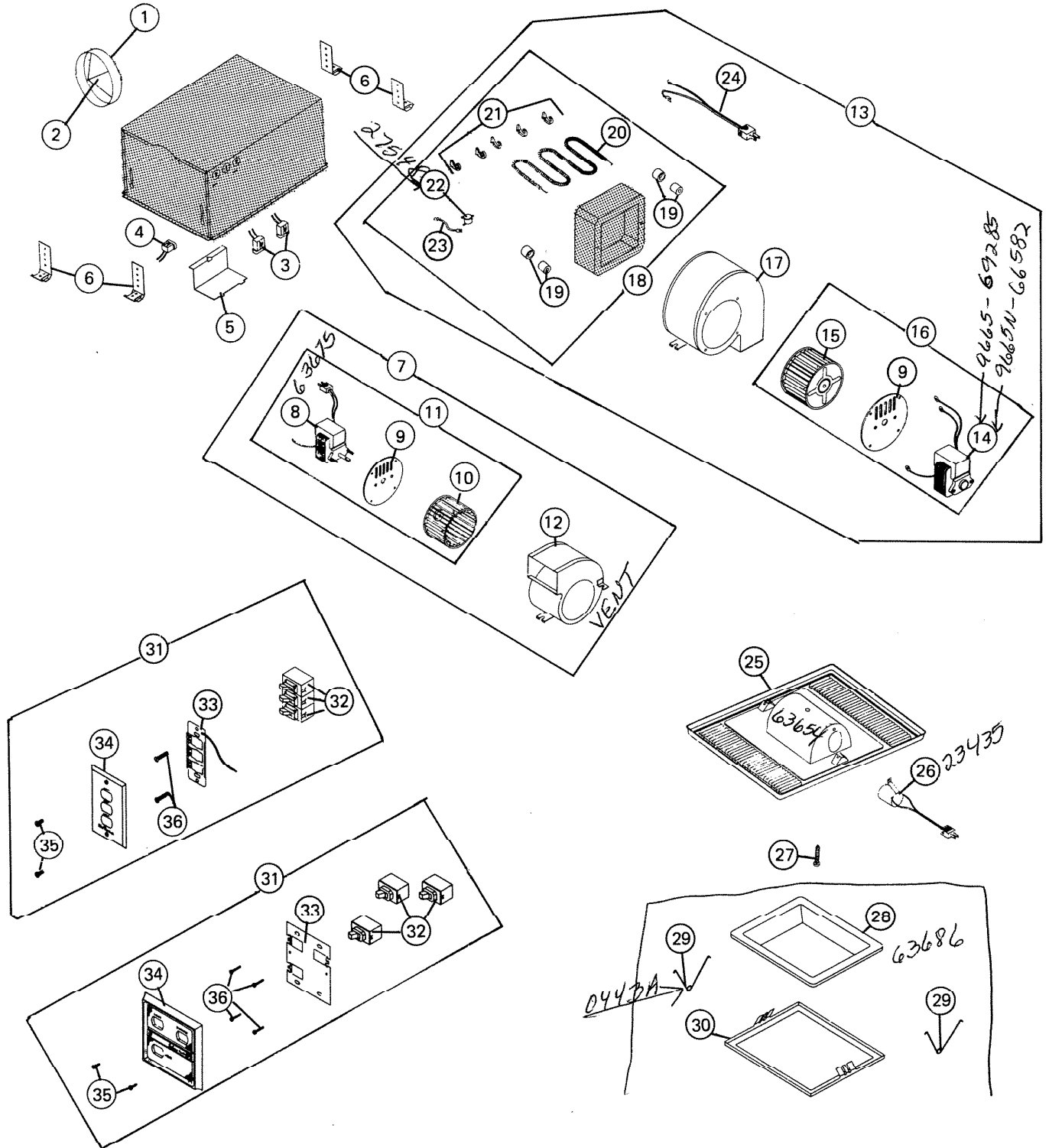


PARTS LIST

EFFECTIVE DATE	MODEL	PRODUCT GROUP
JANUARY 1985	9665, 9665N REVISED	HEATER




NuTone Division
Scovill

(PLEASE SEE OTHER SIDE)

 NOT A PARTS DEPT. STOCK ITEM

REF.	ORIGINAL PART NO.	* PART DESCRIPTION	MODEL USED ON	CURRENT REPLACEMENT PART NO.
1	11390	DUCT ASSEMBLY	9665,9665N	11390-000
2	11394	LOUVER ASSEMBLY	9665,9665N	11394-000
3	10034	BLACK PLUG RECEPTACLE-2 REQUIRED	9665	10034-000
	66204		9665N	66204-000
4	18105	WIRE PLUG RECEPTACLE	9665,9665N	56721-000
5	63647	JUNCTION BOX COVER	9665	63647-005
	65696		9665N	65696-000
6	53196	MOUNTING BRACKET ASSEMBLY	9665,9665N	53196-000
7	69291	VENT BLOWER ASSEMBLY	9665,9665N	69291-000
8	63675	MOTOR - VENT	9665,9665N	63675-000
9	63673	MOTOR MOUNTING PLATE ASSEMBLY	9665,9665N	63673-000
10	66142	BLOWER WHEEL - VENT	9665,9665N	66142-000
11	69357	"B"UNIT-VENT (MOTOR,PLATE,WHEEL)	9665,9665N	69357-000
12	63671	BLOWER HOUSING	9665,9665N	63671-005
13	69297	HEAT BLOWER ASSEMBLY	9665,9665N	69297-000
14	63676	MOTOR - HEAT	9665	69285-000
	66582		9665N	66582-000
15	63677	BLOWER WHEEL - HEAT	9665	66142-000
	66583		9665N	66583-000
16	69355	"B"UNIT-HEAT (MOTOR,PLATE,WHEEL)	9665,9665N	69355-000
17	63678	BLOWER HOUSING	9665,9665N	66578-005
	66578			
18	63679	HEAT BOX ASSEMBLY	9665,9665N	27544-000
19	69314	INSULATOR BUSHING SEI-2 REQUIRED	9665,9665N	69314-000
20	27593	HEAT ELEMENT	9665,9665N	58120-000
21	27546	ELEMENT SUPPORT - 5 REQUIRED	9665,9665N	27546-000
22	27548	THERMAL PROTECTOR	9665,9665N	27548-000
23	19462	HEAT BOX WIRE ASSEMBLY	9665,9665N	19462-W18
24	63680	HEAT PLUG ASSEMBLY	9665	63680-000
	51073		9665N	51073-000
25	63684	GRILLE ASSEMBLY	9665,9665N	63684-000
26	23435	LAMP SOCKET	9665,9665N	23435-000

REF.	ORIGINAL PART NO.	* PART DESCRIPTION	MODEL USED ON	CURRENT REPLACEMENT PART NO.
27	11244	GRILLE SCREW	9665	11244-001
	66584		9665N	52863-000
28	63686	LENS	9665,9665N	63686-000
29	63688	SPRING - 2 REQUIRED	9665,9665N	63688-000
30	63689	BEZEL	9665,9665N	63689-012
31	63705	SWITCH ASSEMBLY	9665	63705-000
	64969		9665N	64969-000
32	21432	SWITCH - 3 REQUIRED	9665,9665N	21432-000
33	27493	STRAP - MOUNTING PLATE	9665	27493-000
	64971		9665N	64971-000
34	27433	WALL PLATE	9665	27433-000
	64972		9665N	64972-000
35	68020	SCREW - 6-32 x 1/2	9665,9665N	68020-001
36	52804	SCREW - 6-32 x 7/8	9665,9665N	52804-015
	69289	<i>Disarmet Kit</i>		 NOTE: Always order by current part number.