

# Built-In Central Cleaning System

**MODEL: CV-353**

## DESCRIPTION

The Central Cleaning System consists of a vacuum power unit, convenient automatic inlets, built-in tubing to connect inlets to the power unit, and cleaning attachments. To use the system is a simple matter of inserting the vacuum hose into an inlet; the power unit starts automatically. A NuTone Central Cleaning System offers four major advantages over portable vacuums:

- (1) a powerful motor to reduce cleaning time,
- (2) lightweight hose and tools eliminate the inconvenience of lifting and pulling a portable machine around the house,
- (3) eliminates dust pollution—unlike the portable vacuum that allows fine dirt particles to pass right through and return to the room, the NuTone power unit is installed in a remote location, utilizes a disposable bag to trap dirt and dust and is ducted to the outside;
- (4) eliminates major noise pollution—the NuTone power unit is located away from the living area, therefore, the noise common to the portable vacuum is kept at a minimum. The power unit is activated by inserting the hose into an automatic wall inlet.

## DESIGN FEATURES

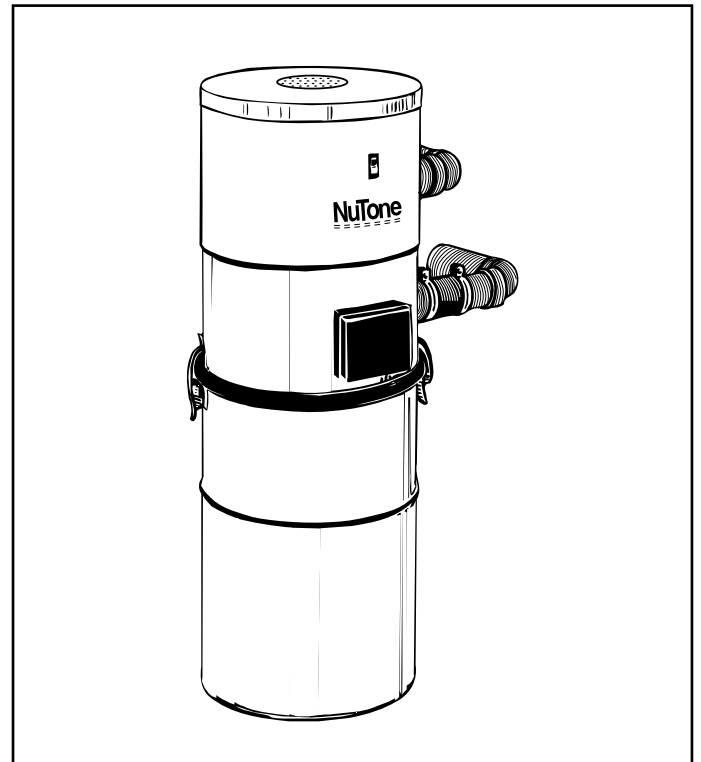
**Dimensions:** 12" diameter x 32¼" high.  
**Housing:** Rugged steel with Designer White polyester appliance finish. Lower section is removable to gain access to 6 gallon soil bag. Hose Inlet and On/Off switch located on housing.  
**Motor:** Fan-Cooled Universal Bypass, 3-stage impeller motor, 2 horsepower input at 17,500 RPM, 10.5 amperes.  
**Vacuum:** **Motor Specifications**

CFM at 2" Diameter Opening	94
Inches of Water Lift at sealed vacuum	134
Air Watts	406

### Performance Ratings

Air Power Units at Tank	354
Air Power Units (ASTM*)	216

\*Testing performed under the guidelines of The American Society for Testing and Materials; an internationally recognized scientific and technical organization founded in 1898 for the development of standards on characteristics and performance.



## INSTALLATION COMPONENTS

**Tubing:** Semi-rigid, 2" OD polyvinylchloride (PVC), high tensile strength, lightweight and easily cut with ordinary saw. Not affected by weather. Self-extinguishing; will not support combustion.

**Fittings:** 2" I.D. Molded PVC. Durable, Lightweight. Available in convenient Rough-In Kits or as separate models.

**On/Off Inlet:** **MODEL 360BG (Beige), MODEL 360D (Dark) or MODEL 360W (White.)** For wall or floor; use **Model 399 Extension Sleeve** for thick floor or wall installation. Protective break-resistant cover. When hose is inserted, vacuum begins; when hose is removed, vacuum stops. **Installs with Model 361 Mounting Bracket. MODEL 330NIV (Ivory Styrene) or MODEL 330W (White.)** Turns system on when hose-end is inserted; off when hose is removed. Streamlined cover closes automatically to seal inlet. **Installs with Model 329 Mounting Plate.**

## INSTALLATION

Power Unit must not be mounted in high ambient temperature area such as attic, furnace room, etc. The Power Unit should be located away from the general living area and NuTone recommends that the system be exhausted to the outside. Locate the power unit within six (6) feet of a grounded electrical outlet. The power unit requires a 120vAC power source. Installation consists of a main trunk line of PVC tubing, running from farthest inlet to power unit; branch lines of tubing are run to the main trunk from each additional inlet. Detailed installation instructions are packaged with each unit.

## ARCHITECT'S SPECIFICATIONS

The Built-In Central Cleaning System shall use Model: CV-353 Power Unit as manufactured by NuTone in conjunction with inlets, fittings, tubing and accessories specified below.

The Power Unit measures 12" diameter x 32¼" high.

## INSTALLATION NEEDS

**NOTE:** When ordering any of the following products, always specify model number(s) and quantities desired.

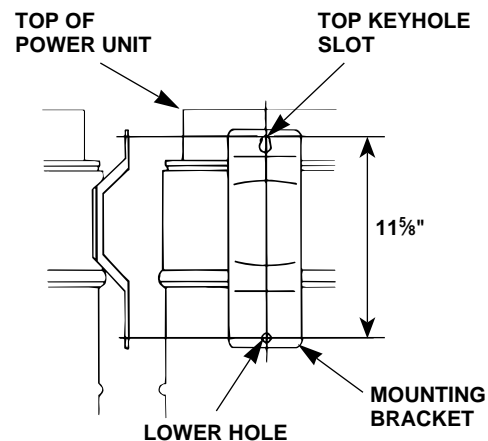
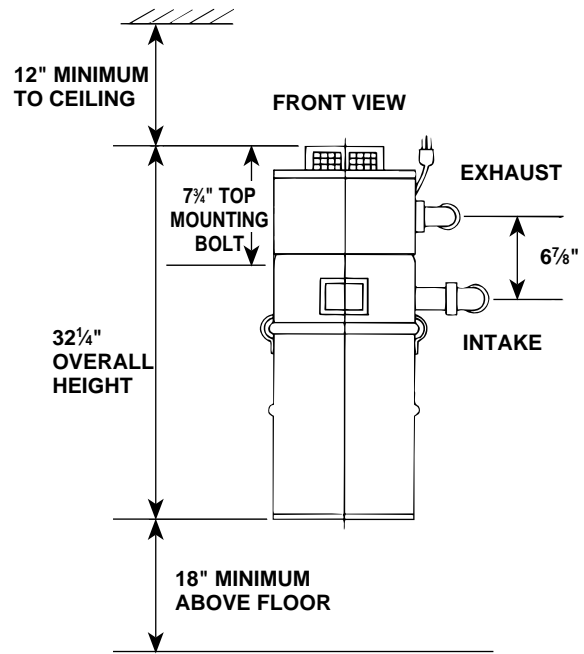
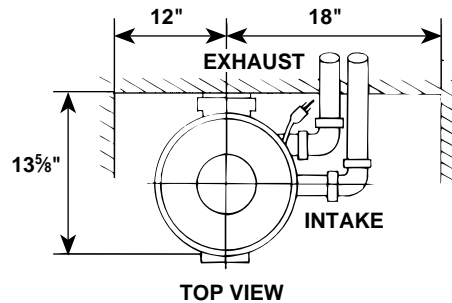
- AUTOMATIC ON/OFF INLETS  
**Model: 360BG, 360D, 360W, 330NIV or 330W**
- FLEXIBLE TUBING – 2" ID X 36"  
**Model: 367**
- ROUGH-IN PACKAGE FOR 3-INLET INSTALLATION  
**Model: 396-3**
- ROUGH-IN PACKAGE TO EXPAND 396-3 BY 1 ADDITIONAL INLET  
**Model: 396-1**
- INLET ROUGH-IN PACKAGE FOR NEW CONSTRUCTION  
**Model: 395**
- EXISTING HOME INLET KIT  
**Model: 326N**
- PVC TUBING – 2" OD X 8' (each package contains eight (8) pieces – 64 ft. total length)  
**Model: 380-8**

## ACCESSORIES

- HANG-BAG WITH TOOLS  
**Model: 333 (Economy) or 573 (Deluxe)**
- MOLDED CADDY WITH TOOLS  
**Model: 373N**
- HOSE ASSEMBLY  
**Model: 332** 32' Economy Hose  
**Model 349N** 32' Standard Current Carrying Hose  
**Model 372** 32' Standard Hose  
**Model 549N** 32' Deluxe Dual Low-Voltage Current Carrying Hose  
**Model 572** 32' Low-Voltage Control Hose
- MOTOR-DRIVEN POWER BRUSH  
**Model: 599**
- TWIN-TURBINE AIR-DRIVEN BRUSH  
**Model: 343**

Refer to the NuTone Central Vac Catalog for additional information.

## MINIMUM WALL CLEARANCE DIMENSIONS



Product specifications subject to change without notice.

# NuTone®

Madison and Red Bank Roads, Cincinnati, Ohio 45227  
Printed in U.S.A.